



*Innovative UV Solutions*



**HPI**  
GLOSS CONTROL TECHNOLOGY



Miltec UV • 146 Log Canoe Circle • Stevensville, MD USA  
Ph: 410-604-2900 • Fax: 410-604-2906 • email: sales@miltec.com

[www.miltec.com](http://www.miltec.com)

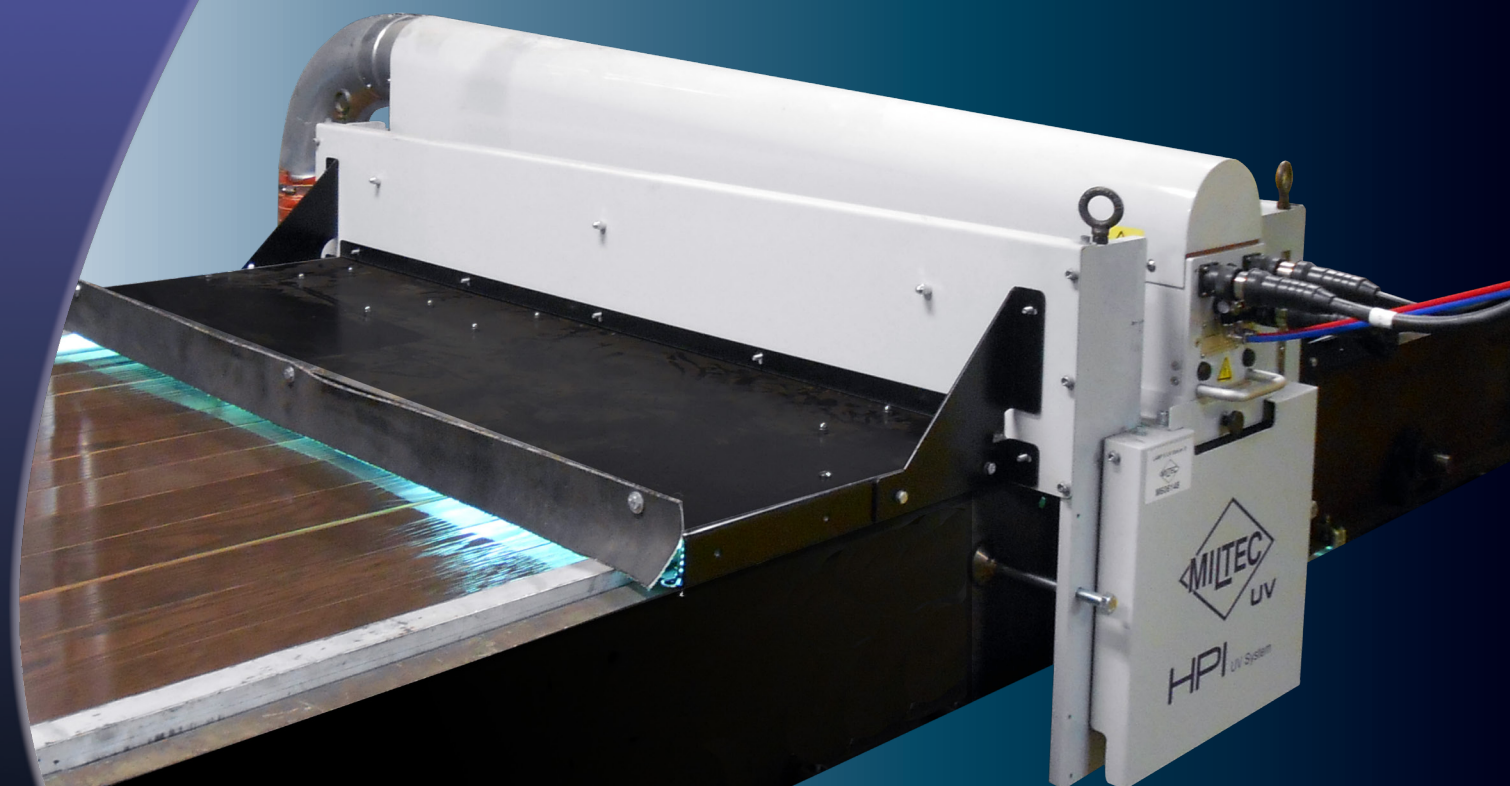


008-00150

Achieve a Very Wide Gloss Range using a Single UV Coating.

Reduced Downtime Associated with Coating Changeovers

Innovative UV Curing Technology allows the Use of Fewer Lamps and Requires Less Maintenance.



**Miltec UV Gloss Control Technology** enables manufacturers to achieve a wide gloss range using a single UV coating. Our technology provides industry leaders the flexibility to meet the ever changing consumer tastes and specifications for years to come. Low, medium, and high gloss levels are attainable with repeatable results and selectable recipes which make quick lamp adjustments to accommodate varying product gloss targets. Return on investment to the end user will typically be less than one year. Cost savings are significant with reduced; downtime for process changeovers, minimal equipment maintenance, lower energy & parts consumption, fewer coatings, less scrap, as well as improved product quality and consistency. Our innovative equipment is extremely easy to use and maintain, energy efficient, eco-friendly, and performs to the highest demands in production.

## Advantages

1 Repeatable results

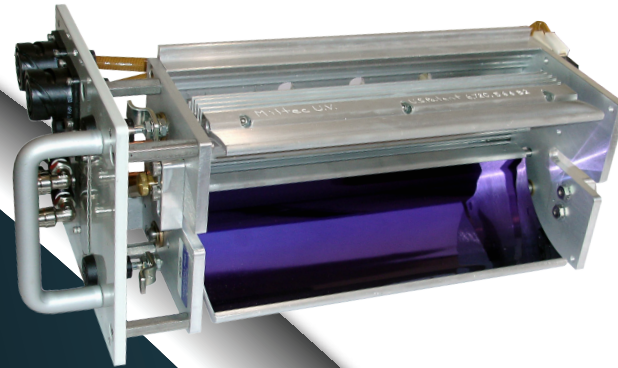
2 Easy retrofit to replace existing equipment

3 Reliable performance with consistent UV output

4 Touchscreen controls quickly adjust gloss levels for multiple products

5 Fewer UV lamps on finishing line lowers energy and operating costs

6 Achieve specific gloss levels across a wide gloss range with a single coating



## HPI Lamp Module

### Increased Cure Speed Compared to UV Systems Currently Used in Production



Our HPI (High Peak Intensity) offers superior results with your toughest curing problems, including heavily pigmented or dense inks, stains, coatings, and adhesives in a wide range of production applications.



- Patented reflector design allows for faster and easier tool-less lamp and liner changes.
- Variable UV output from 40%-100% in 1% increments

## HPI Power Supply

Provides Reliable, Consistent UV Output, with Low Maintenance



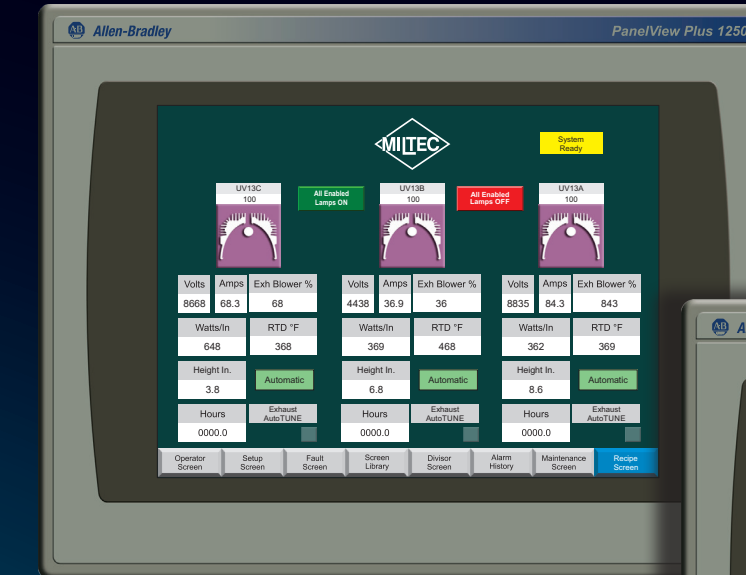
Ballasts and cabinets are thermally monitored for excellent cooling efficiency

Industry standard controls and components, safe and easy accessibility

± 15% tolerance to line voltage changes without affecting UV output

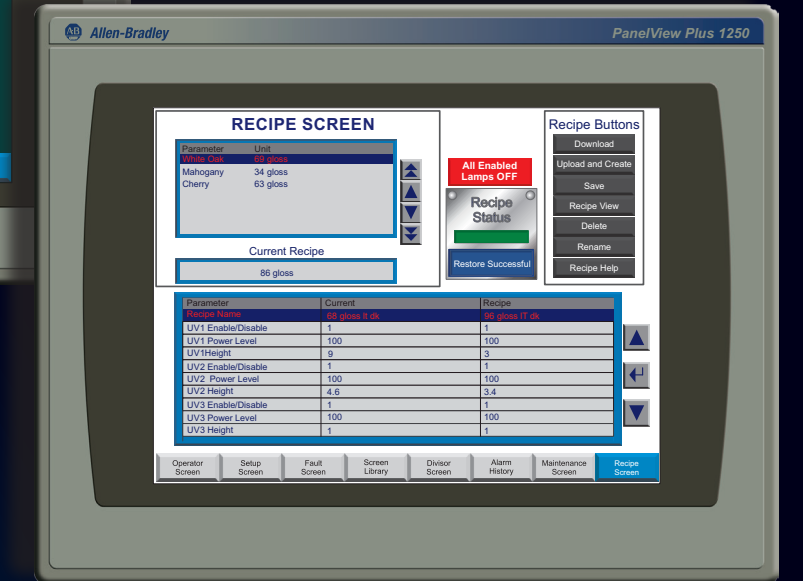
External Graceport allows for remote customer support and troubleshooting

## Interactive, Intuitive Controls



Advanced touchscreen controls for easy operator interface

- Touchscreen displays the user manual, electrical schematics, troubleshooting library and much more
- On Screen "How To" maintenance videos
- Recipe screen for saving and recalling gloss settings



Gloss control applications include:

Hardwood Flooring

Molding / Profile

Cabinetry

Trim

Panel / Sheet

Window

Doors

Guitar

Vinyl Tile

Furniture